

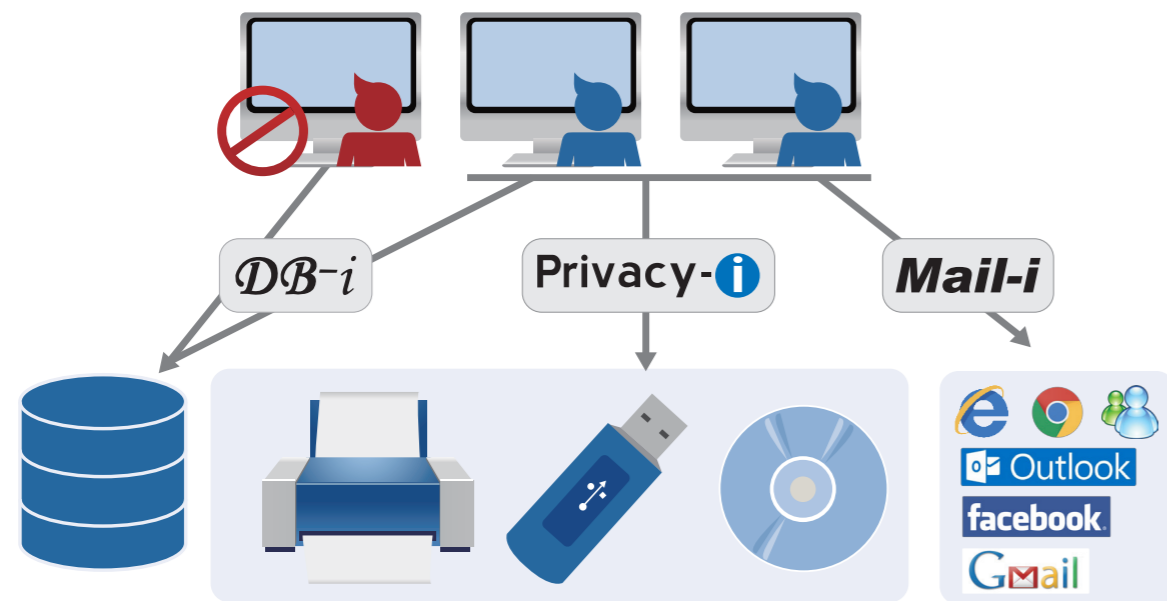
Mail-i

More Corporate information and data is being exchanged and transferred through your network via Email, Instant Messenger, FTP, Social Media, etc. like never before, increasing your liabilities and risk exponentially.

Sensitive Data and Personal Information is leaving your organization and you need a simple and cost effective solution to stop leakage, help you meet compliance regulations, and mitigate legal issues.

Using superior packet and protocol analysis technology, the Somansa Mail-i Network Data Loss Prevention (DLP) security solution will meet the internal policies of your company and your regulatory compliance requirements.

Somansa's Total Data Security and Compliance Solutions



About SOMANSA

Somansa is a global leader in Data Security and Compliance. Using its advanced packet and protocol analysis technology, Somansa provides a total security solution to Monitor, Protect, and Discover data using a powerful search function. With over 10 years of experience in security and protocol management, Somansa is dedicated to providing superior technology and service to its worldwide customers.



Mail-i

Network Data Loss Prevention (DLP)

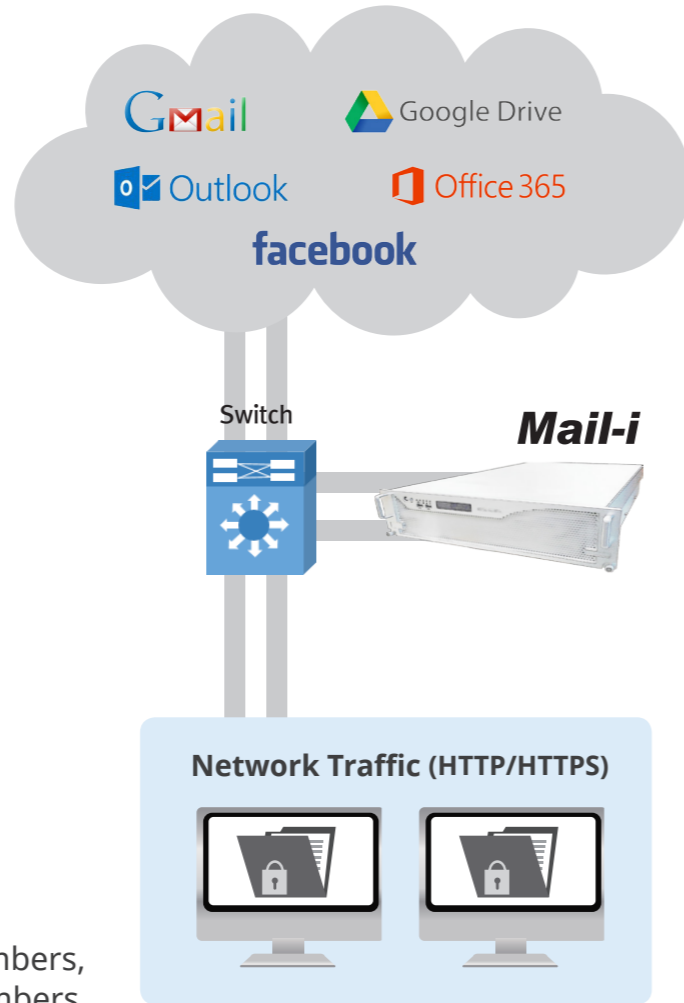
Somansa Mail-i provides organizations with an advanced Network Data Loss Prevention (DLP) solution to protect sensitive data in Motion using its powerful Monitor, Discover, Security-Prevent, and Management features.

Somansa Mail-i monitors sensitive data in motion, Email, FTP, HTTP/HTTPS based on pre-defined and customizable content-aware policy rules.

Monitor

Network protocols and sensitive data including intellectual property and personal information are monitored for data leakage and regulatory compliance.

Email, Web-hosted mail, Instant Messenger, HTTP/HTTPS, FTP, Telnet, Social Networking, P2P, Cloud Storage, etc.

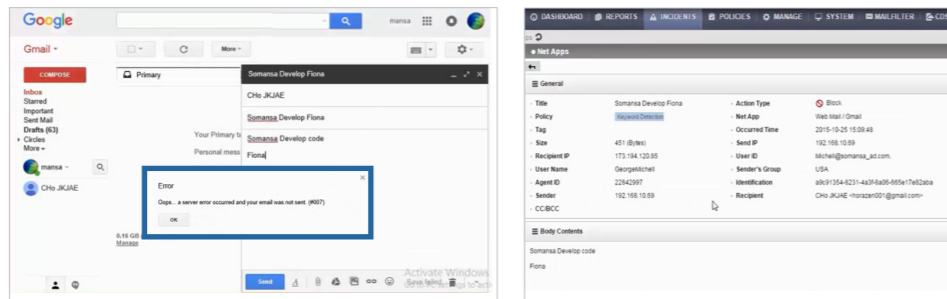


Prevent Security

Based on policies rules, Somansa Mail-i monitors and detects sensitive data in motion. Policies can be defined according to Industries for Regulatory Compliance and internal security policies including regular expressions, fingerprint, data matching, keywords/dictionaries and patterns including Social Security Numbers, Credit Card Numbers, Medical Record Numbers.

Discover

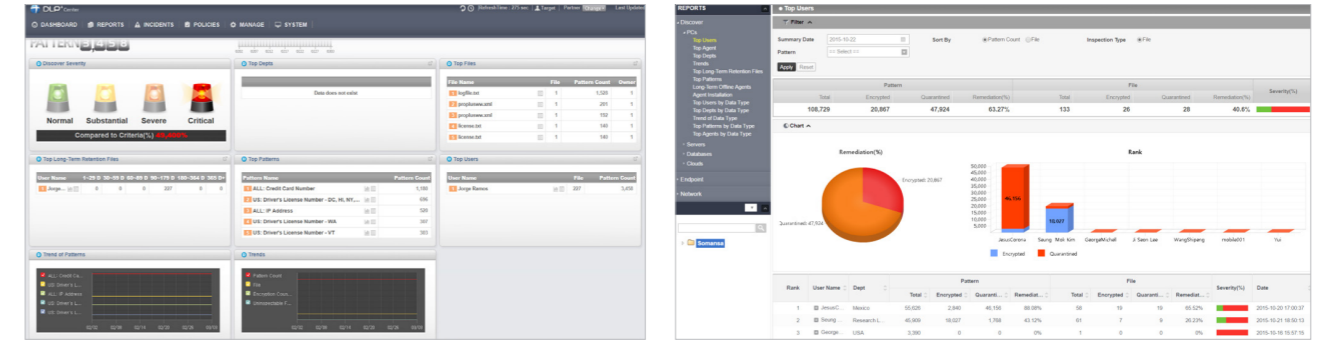
Mail-i provides a search function to quickly retrieve logged sensitive data based on rules for auditing and legal evidence.



[Monitor and Block sensitive data based on policy rules, ie. Gmail]

Management

- Centralized Management
- Real-time Alerts
- Users (ie. Active Directory/LDAP)
- Reporting (compliance & audits)
- Set Policy Rules



[Web-based Central Management Console]

Data Loss Prevention

Mail-i protects sensitive data and personal information by monitoring sensitive data in motion, Email, IM, HTTP/HTTPS, SNS, etc.

Regulatory Compliance

Mail-i helps organizations comply with regulatory compliance requirements including PCI-DSS, GLBA, HIPAA, SOX to protect personal data such as Social Security Numbers, Credit Card Numbers, and Medical Records.

E-Discovery

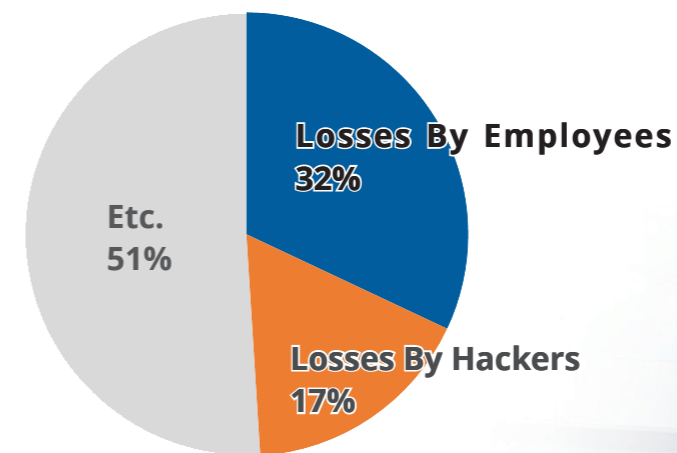
Mail-i provides a quick search function to retrieve data for legal evidence.

"The Mail-i was selected to identify and protect confidential company and patient information in preparation for HIPAA regulations."

South Nassau Communities Hospital, Somansa Compliance Customer

Breaches of Confidentiality

According to CSI/FBI, most security incidents are caused by insiders. You could lose your competitive edge with intentional or inadvertent Email attachment. Mail-i archives every outgoing messages including Email, Web-hosted mail and IM.



More information is lost by employees than Hackers

